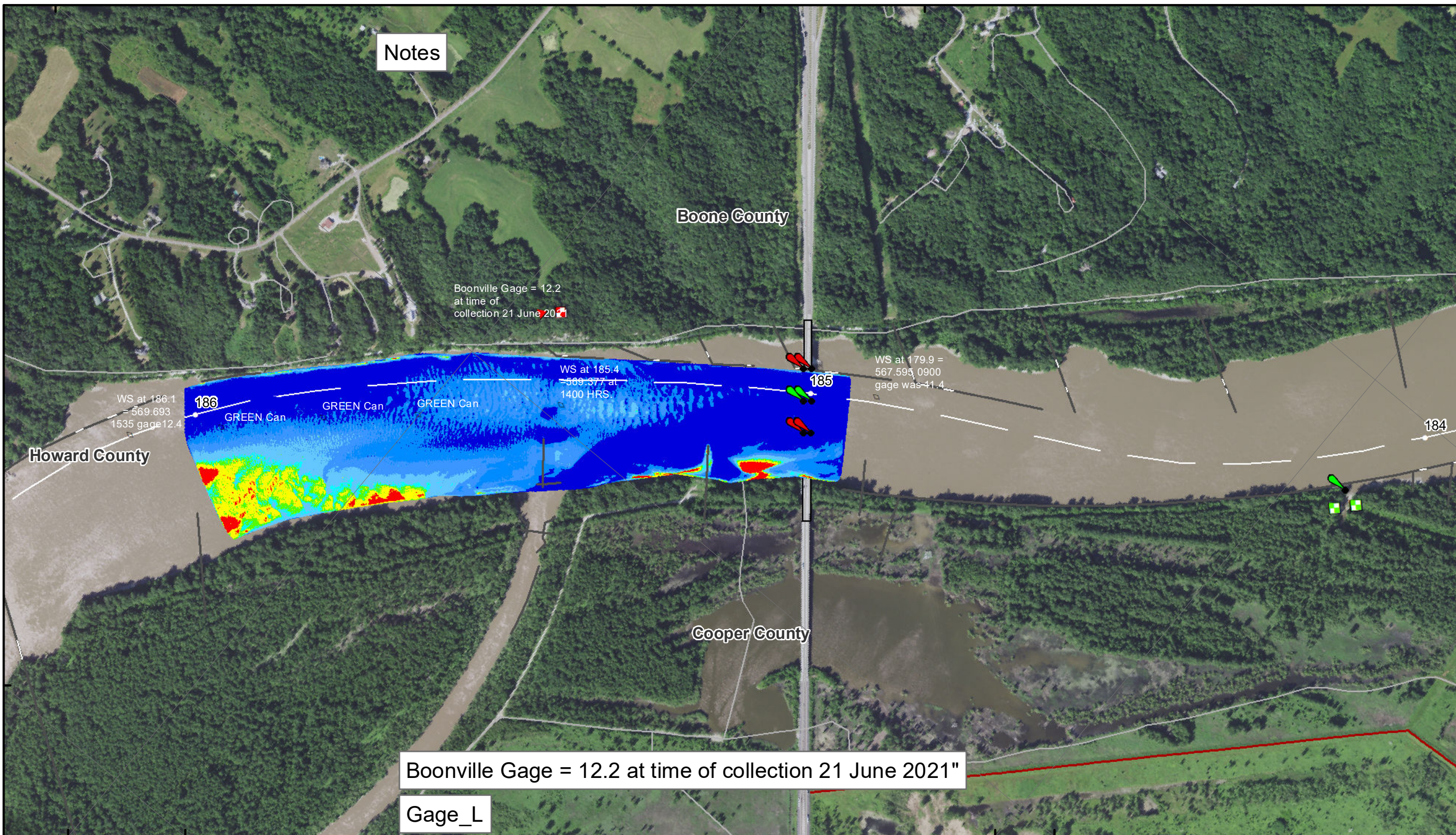


92°33'W

38°58'N

92°32'W



Notes

Boonville Gage = 12.2
at time of
collection 21 June 2021

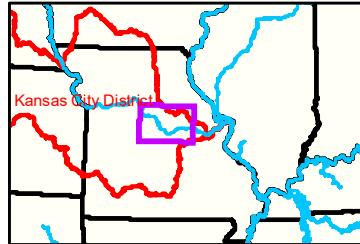
WS at 185.4
= 569.377 at
1400 HRS

WS at 179.9 =
567.593 0900
gage was 41.4

WS at 186.1
= 569.693
1535 gage 12.4

Boonville Gage = 12.2 at time of collection 21 June 2021"

Gage_L



LEGEND

	< 8		< 8 ft		Green Passing		Green
	8 - 9		8 - 9 ft		Red Passing		AIS Green CAN
	9 - 9.5		9 - 10 ft		Green Crossing		AIS Red NUN
	9.5 - 10		10 - 12 ft		Red Crossing		Green CAN
	10 - 12		River Mile				Red NUN
	12 - 14		Sailing Line				
	14 - 16		BSNP Structure				
	> 16		Levee				

Buoy

- Green
- Red
- Junction

Scale: 0 312.5 625 937.5 1250 2500 Feet

NOTES:
Horizontal Coordinate System: World Geodetic System of 1984 (WGS84), projected to the Universal Transverse Mercator (UTM) Zone 15 North. Distance units in U.S. Survey Feet.
Vertical Datum: Soundings are shown in feet and indicated depths are referenced to water surface at time of collection.
The information depicted on this map represents the results of a survey conducted on the date indicated and can only be considered to represent the general condition existing at that time.
The location of navigation aids are based on and provided by the U.S. Coast Guard.



Distribution List: The data represents the results of a survey conducted on the date indicated and can only be considered to represent the general condition existing at that time. The information depicted on this map represents the results of a survey conducted on the date indicated and can only be considered to represent the general condition existing at that time. The location of navigation aids are based on and provided by the U.S. Coast Guard.

KANSAS CITY DISTRICT MISSOURI RIVER AREA OFFICE	
Surveyed By:	NR, AO
Reviewed By:	NR, AO
Checked By:	NR, AO

Survey Information
MO_02_LMR
MO_02_LMR_20210621_CS_185_0_186_0_SORT
21 June 2021

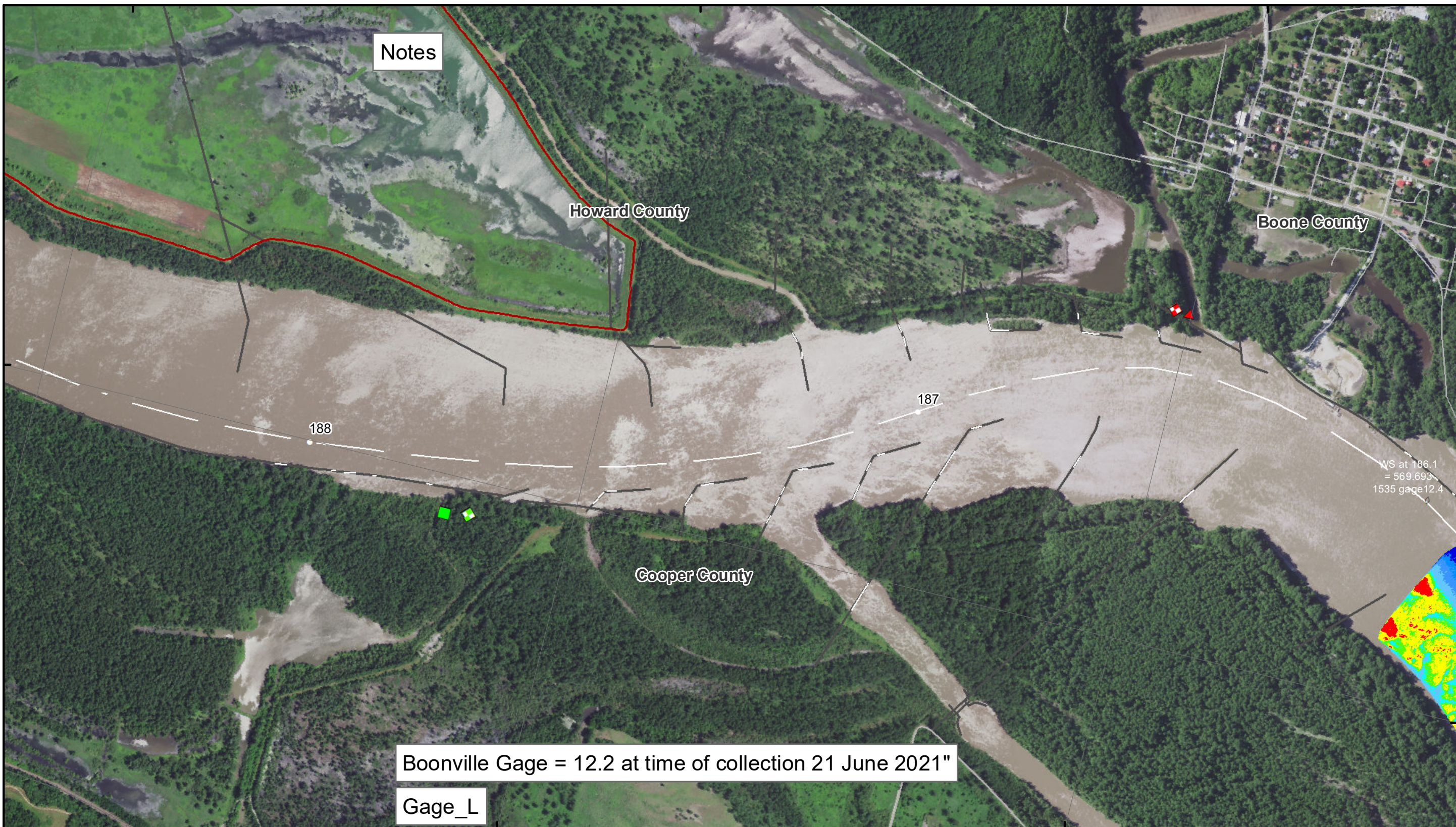
Sheet Number
39 of 46

92°36'W

92°35'W

92°34'W

38°58'N



Notes

Howard County

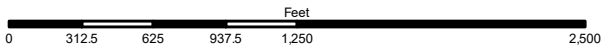
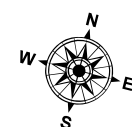
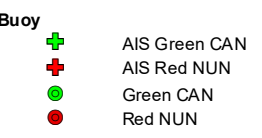
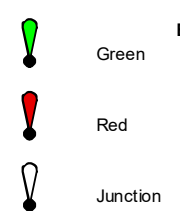
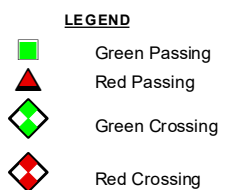
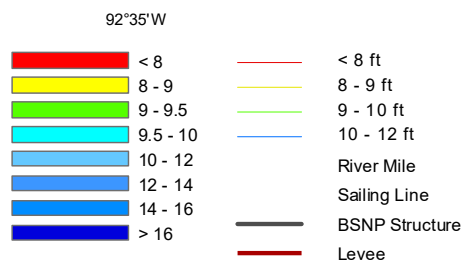
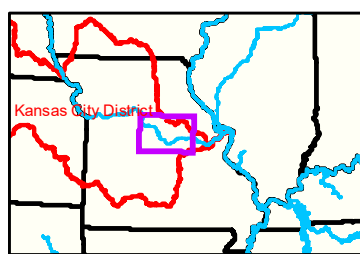
Boone County

Cooper County

Boonville Gage = 12.2 at time of collection 21 June 2021"

Gage_L

WS at 186.1 = 569.693 1535 gage 12.4



NOTES:
 Horizontal Coordinate System: World Geodetic System of 1984 (WGS84), projected to the Universal Transverse Mercator (UTM) Zone 15 North. Distance units in U.S. Survey Feet
 Vertical Datum: Soundings are shown in feet and indicated depths are referenced to water surface at time of collection.
 The information depicted on this map represents the results of a survey conducted on the date indicated and can only be considered to represent the general condition existing at that time.
 The location of navigation aids are based on and provided by the U.S. Coast Guard.



DISCLAIMER: The United States Government is authorized to reproduce and distribute reprints for government purposes not withstanding that copyright notation may appear hereon. This document is the property of the U.S. Army Corps of Engineers and is loaned to your organization. It and its contents are not to be distributed outside your organization. The U.S. Army Corps of Engineers is not responsible for any errors or omissions in this document. The U.S. Army Corps of Engineers is not liable for any damages, including consequential damages, arising from the use of this document. The U.S. Army Corps of Engineers is not liable for any damages, including consequential damages, arising from the use of this document.

KANSAS CITY DISTRICT MISSOURI RIVER AREA OFFICE	
Surveyed By: NR, A/O	Checked By: NR, A/O
Drawn By: NR, A/O	Approved By: NR, A/O

Survey Information
 MO_02_LMR
 MO_02_LMR_20210621_CS_185_0_186_0_SORT
 21 June 2021

Sheet Number
 40 of 46